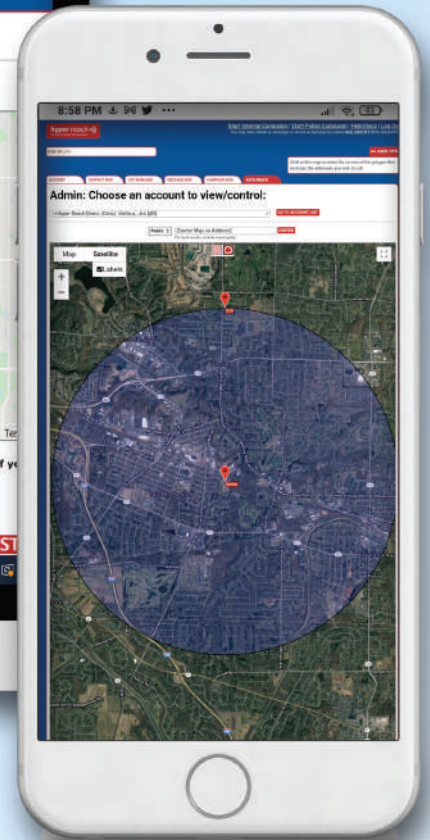
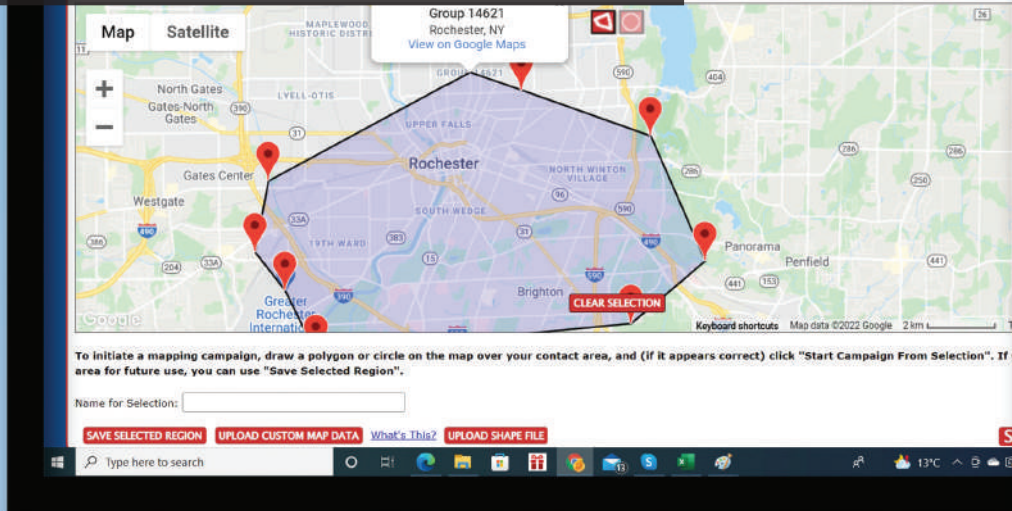


Hyper-Reach



MAPPING Faster, Easier, More Accurate!

Hyper-Reach offers the easiest mapping selection tool of any emergency alert system anywhere. And now it's more accurate, more efficient and yes, even more user-friendly. First, we started with Google Maps, because of its universal ease of use, enormous investment in maps, and amazing uptime (over 99.99+%).

Then, we built in user-friendly features like exclusion of designated addresses, direct integration with your 9-1-1 ANI/ALI data, 3rd-party lists and community enrollment data, cloned campaigns, and full web access with no specialized hardware or software needed.

But that's not all. Because we insist on a 95+% geo-coding match rate to your 9-1-1 and other data, we effectively add streets that other sources (Google, ESRI, etc.) may not have. The result is not only more accuracy, but the ability to reach more people than other vendors, using the very same contact list.

- Exploded view and pinpoint locations easily, even with misspellings and typos.
- Zoom in and out to see the area in context. Find streets, intersections and buildings.
- Get a satellite view of your target area.
- Save pre-designated shapes at the press of a button (sectors, zones, police beats).
- Upload custom boundary files, such as KML and Shapefiles.
- Search address points with exploded view.



855-2NOTIFY
855-266-8439



www.hyper-reach.com



hr_info@hyper-reach.com